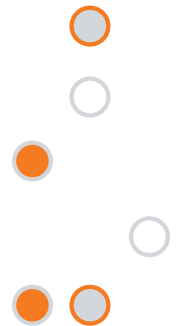


RT5D



recessed volumetric downlighting

THE PERFECT COMPLEMENT to RT5™ volumetric lighting is the new RT5D volumetric downlight. The RT5D shares the RT5 family aesthetics and is a more visually appealing downlight, making your space feel brighter without the glare or cave effect of traditional downlights. In addition to the soothing, spacious light, you'll enjoy the same RT5 energy savings. Lower energy costs plus fewer maintenance needs make these downlights a perfect partner to RT5 recessed lighting.



new addition to the RT5™ family of products

Unlike traditional downlights, RT5D is designed to deliver the right amount of soft, even light throughout a space.

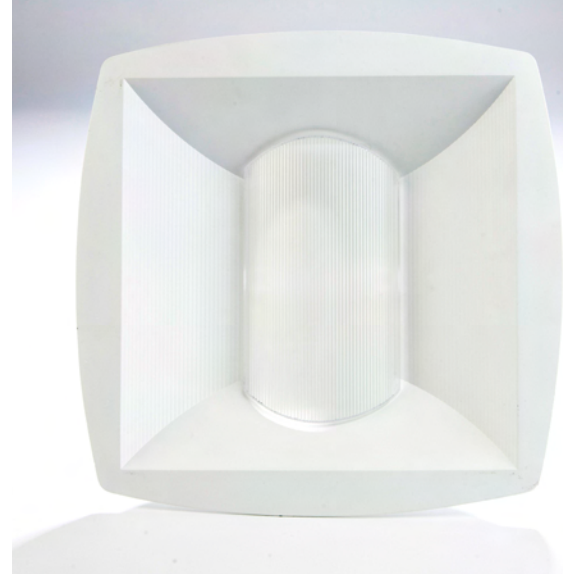
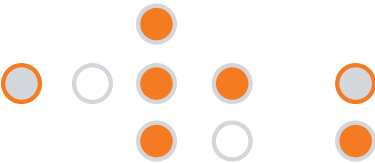
The RT5D companion downlight is ideal for:

- Corridors
- Lobbies
- Conference Rooms
- Private Offices

RT5D will improve the aesthetics of any application by providing volumetric lighting and a quiet ceiling.

Let RT5D be your first choice when enhancing your space with volumetric lighting. You'll enjoy:

- Improved Aesthetics
- Energy Savings
- Easy Installation



RT5D 1' x 1'

ORDERING INFORMATION

For shortest lead times, configure product using standard options (shown in bold). Example: RT5D

RT5D						Options	
Series	Wattage/lamp	Voltage					
RT5D	(blank) 1/26-42TRT ¹	(blank) MVOLT ²					
	1/26TRT One 26W TRT lamp	120	120V ³	EL	Emergency battery pack; integral test switch provided⁴		
	1/32TRT One 32W TRT lamp	277	277V ³	ELR	Emergency battery pack; remote test switch provided⁴		
	1/42TRT One 42W TRT lamp	347	347V	GMF	Single, slow-blow fuse ^{3,4}		
				ADEZ	Advance Mark 10™ electronic dimming ballast, 120V or 277V; minimum dimming level 5% ^{3,4}		
				DMHL	Lutron Compact SE™ electronic dimming ballast, 120V or 277V; minimum dimming level 5% ^{3,4}		
				WLP	35K lamp (shipped separately)		
				BDP	Ballast disconnect plug (meets codes that require in-fixture disconnect)		
				S5	1.0 ballast factor SIMPLY5 system ^{4,5}		
				S5HW	Hardwire for S5 system; replaces RELOC® wiring ^{4,5}		

NOTES:

- 1 Not available with DMHL or WLP.
- 2 Electronic multi-volt ballast capable of operating on any line voltage from 120-277V, 50 or 60HZ.
- 3 Voltage must be specified when ordering with GMF, ADEZ and DMHL.
- 4 Not available in 347V.
- 5 SIMPLY5 includes 9' S5 SSC RELOC® wiring system; specify voltage unless S5HW (hardwire).

SIMPLY5™
LIGHTING INTELLIGENCE

Lithonia Lighting
Downlighting
One Lithonia Way, Conyers, GA 30012
Phone: 800-315-4935 Fax: 770-918-1209
www.lithonia.com