

AFFINITY™

architectural emergency lighting



 LITHONIA LIGHTING®

AFFINITY™

Introducing **Affinity** architectural emergency lighting from Lithonia Lighting. The Affinity Series offers emergency egress lighting in a surprisingly attractive package — it will change the way you think about emergency lighting.

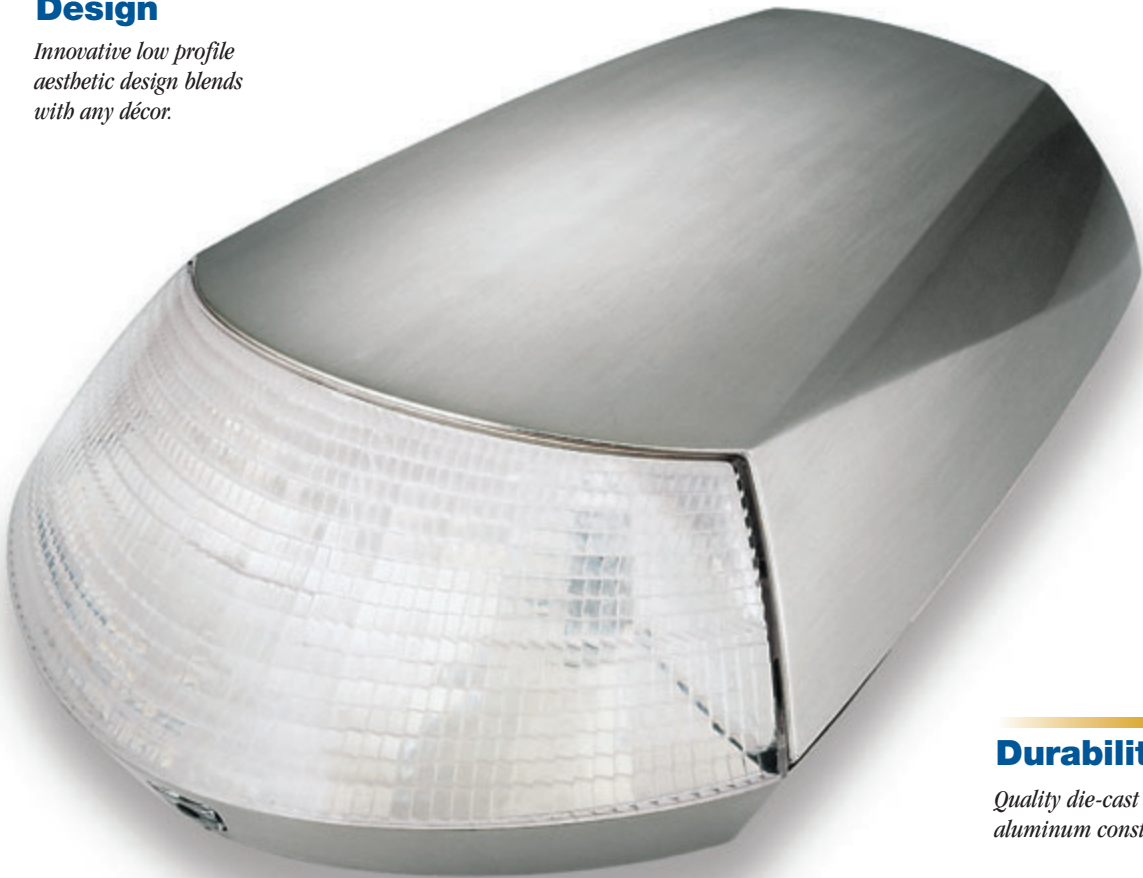
Architectural Design

Innovative low profile aesthetic design blends with any décor.

Finishes

Available in four designer finishes: nickel, white, dark bronze and black.*

** Available with Exterior package only.*



Durability

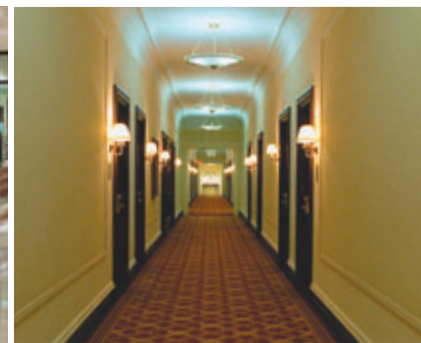
Quality die-cast aluminum construction.

Status Indicator

Status light indicates when unit is energized. With the premium package, indicator will additionally display status of electronics, battery and lamps.

Advanced Optics

Patent-pending optical chamber features a vacuum-metalized die-cast reflector, a multi-faceted/highly-transmissive refractor and two high performance Xenon lamps. Yields 26' center-to-center spacing.



AFFINITY™



applications

- ▲ **Affinity's** sconce-like design blends seamlessly into the most sophisticated interiors, maintaining the integrity of the space and providing a decorative alternative to typical two-headed units or higher-priced recessed units. Affinity emergency lighting is perfect for retail spaces, schools, hotels, restaurants, offices and outdoor applications where aesthetics cannot be compromised.
- ▲ The **durable cast aluminum housing** is available in nickel, white, dark bronze and black finishes and can be custom painted in the field to match any décor.
- ▲ The precisely engineered optical chamber features a vacuum-metalized, die-cast reflector, a multifaceted, highly-transmissive refractor and **two high-output Xenon lamps**. These features combine to deliver 26' center-to-center spacing.



- ▲ The Affinity Series is available with **two options packages**: The Premium package (PREM) features high-temperature, nickel-cadmium batteries, and a multi-functional self-diagnostics platform 0°C to 50°C (32° to 122°F). The Exterior package (EXT) adds a wet location listing from -18°C to +50°C (0°F to 122°F) and includes a cold weather and damp location 0°C to 50°C listing for exterior lighting applications.

finishes

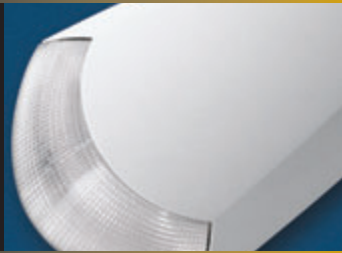
Available in four designer finishes: nickel, white, dark bronze and black. Unit can also be painted in the field to match interior/exterior.*

*Available with Exterior package only.

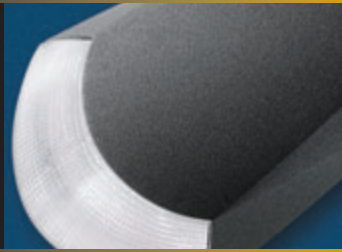
nickel



white



dark bronze



black



Ordering Information

AFFINITY™

Family	Finish	Options
AFN	BN Brushed Nickel	PREM Premium package - features ni-cad battery, self-diagnostics and damp location battery 0°C to 50°C (32° to 122°F)
	W White	
	B Black	EXT Exterior package - features self-diagnostics, ni-cad battery, heater, battery blanket, wet location and temperature rating of -18°C to +50°C (0°F to 122°F) ^{1,2}
	DB Dark Bronze ¹	

Accessories	
ELA AFN DPB EXT	Remote fixture to be powered by 6V battery equipment as part of an emergency lighting system

- Notes:**
- 1 Available with Exterior package and remote fixture only. Other finishes not available with the Exterior package or remote fixture.
 - 2 The Exterior package includes high temperature ni-cad batteries, wet-location rating, self-diagnostics and a temperature rating of 0oF to 122oF.

Affinity Photometrics and Performance



*Meets Life Safety Code standard minimum illuminance of 0.1 FC and average illuminance of 1.0 FC. Assumes open space with no obstructions, mounting height: 8.5', ceiling height: 9', and reflectances: 80/50/20.

